

Greengate East, Manchester, M40

£160,000

Offers in Excess of

Tenure: Leasehold, **Bedrooms:** 3

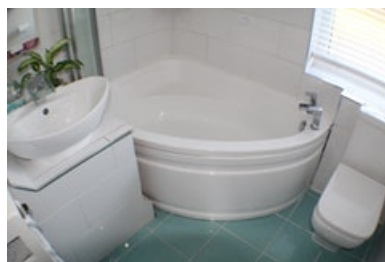
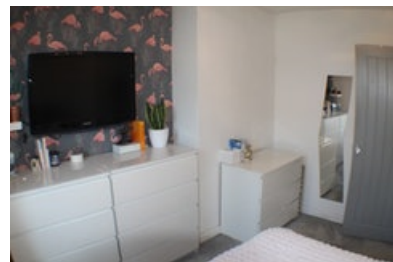
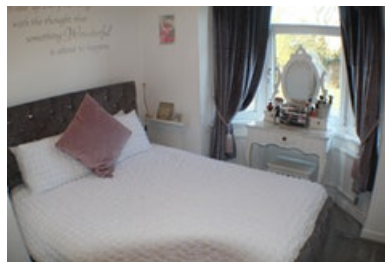
GUIDE PRICE £160,000 - £170,000. *** BEAUTIFUL PROPERTY IN A VERY DESIRABLE LOCATION *** This lovely house is fully modern throughout and has been tastefully decorated to a very high standard There is a large double driveway at the front and a renovated and well maintained garde

Key features:

- garden
- driveway
- open plan kitchen
- LED lighting
- Underfloor heating
- Breakfast Bar
- Astro turf

Extra info:

- **Property Age:** 50 years
- **Council Tax:** Band B (£1050.00 per-annum)
- **Double Glazing:** All
- **Heating:** Gas
- **Parking:** Off Street Parking
- **Lease info:** 912 years remaining



GUIDE PRICE £160,000 - £170,000.

*** BEAUTIFUL PROPERTY IN A VERY DESIRABLE LOCATION ***

This lovely house is fully modern throughout and has been tastefully decorated to a very high standard

There is a large double driveway at the front and a renovated and well maintained garden to the rear

The Lounge area is very spacious and gets lots of light looking out to both the front and the back of the house. It has been very nicely decorated complete with colour changing LED lights

The open plan kitchen is beautiful and spacious. The kitchen comes with all the expected mod cons and also with USB port chargers and a garbage disposal system in the sink

Upstairs the rooms are all spacious. One of the bedrooms has a custom made storage unit fitted in to allow extra storage space however it is screwed in and can very easily and quickly be removed to use the full size of the room

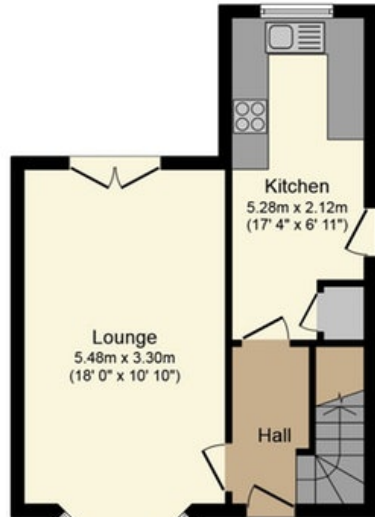
The master bedroom is very spacious

The bathroom is immaculately maintained, modern, and comes with under-floor heating

This is a lovely house and will make someone a beautiful home

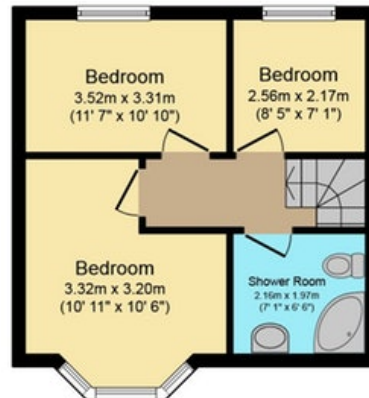
The area is very desirable due to its easy access to Manchester and great road and transport links

Floor plan:



Ground Floor

Floor area 37.0 sq. m. (398 sq. ft.) approx



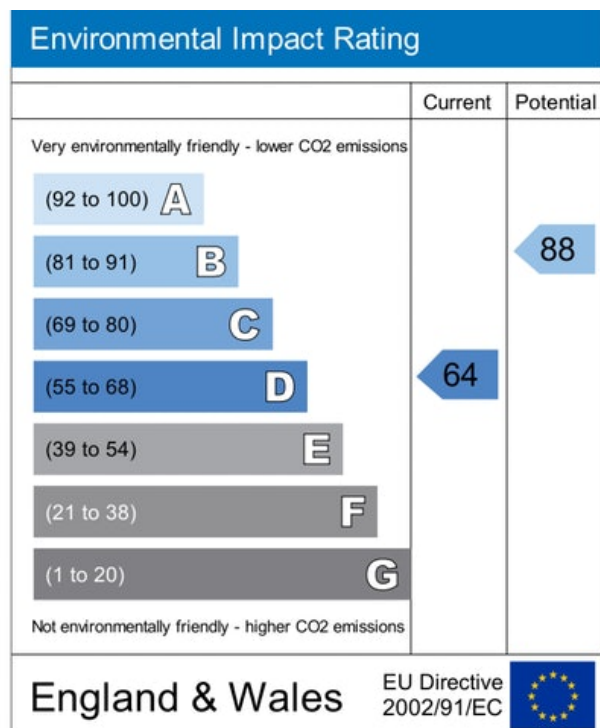
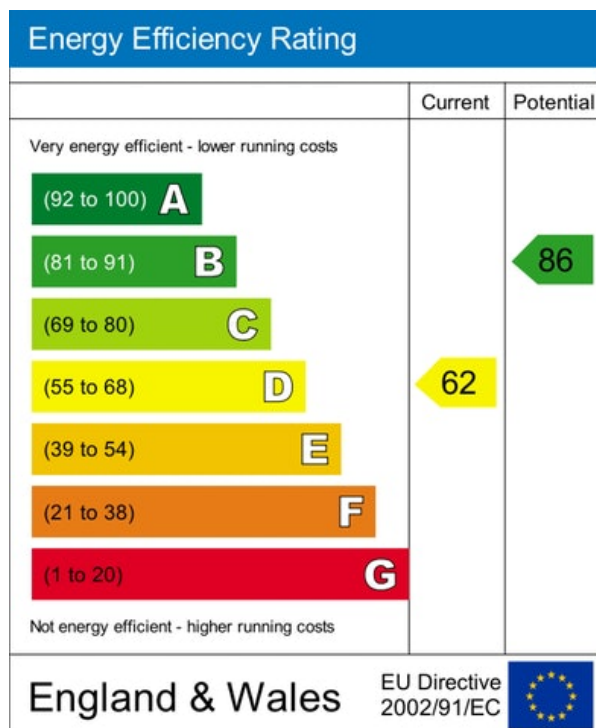
First Floor

Floor area 31.0 sq. m. (334 sq. ft.) approx

Total floor area 68.0 sq. m. (732 sq. ft.) approx

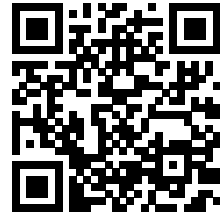
This Floor Plan is for illustration purposes only and may not be representative of the property. The position and size of doors, windows and other features are approximate. Unauthorized reproduction prohibited. © PropertyBOX

Energy Performance Certificate:



MISREPRESENTATION ACT, 1967.

Conditions under which these particulars are issued Housesimple.com for themselves and for the vendors or lessors of this property whose agents they are, give notice:- These particulars do not constitute, nor constitute any part of, an offer or contract. All statements contained in these particulars as to this property are made without responsibility on the part of Housesimple.com or the vendors or lessors. None of the statements contained in these particulars as to this property are to be relied on as statements or representations of fact. Any intending purchasers or lessees must satisfy themselves by inspection or otherwise as to the correctness of each of the statements contained in these particulars. The vendors or lessors do not make or give, and neither Housesimple.com nor any person in their employment has any authority to make or give, any representations, or warranty whatever in relationship to this property.



To book a viewing scan this code