



Rider Road, Leeds, LS6

£190,000

None

Tenure: Freehold, **Bedrooms:** 5

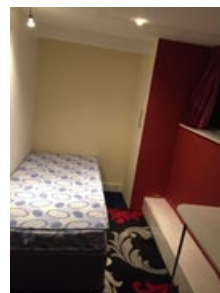
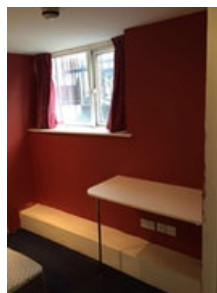
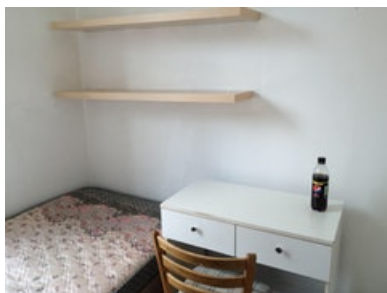
A five bed mid terrace property with a large amount of investment potential, offered for sale with NO ONWARD CHAIN. Situated in the very popular Woodhouse area of the city, the location offers easy access to a good range of local shops and amenities, universities and excellent transport links t

Key features:

- Five bedrooms
- Investment opportunity
- NO ONWARD CHAIN
- Two bathrooms
- Popular residential area
- Close to local shops and amenities
- Near universities
- Excellent transport links to city centre
- Viewing highly recommended

Extra info:

- **Property Age:** 85 years
- **Council Tax:** Band A (£1102.00 per-annum)
- **Double Glazing:** All
- **Heating:** Gas
- **Parking:** Street Parking



A five bed mid terrace property with a large amount of investment potential, offered for sale with NO ONWARD CHAIN. Situated in the very popular Woodhouse area of the city, the location offers easy access to a good range of local shops and amenities, universities and excellent transport links to the city centre. The property is set over four floors and benefits from gas central heating and double glazing, a fitted kitchen and living room. Shower room along with a bedroom on the lower ground floor, two bedrooms and house bathroom on the first floor and a further two bedrooms on the second floor.

The accommodation comprises:

Lower Ground Floor

Bedroom 3.86m (12'8") x 1.80m (5'11")

Double glazed window to front, two storage cupboards, radiator.

Shower Room

Shower, wash hand basin and WC, full height tiling to all walls, tiled flooring.

Ground Floor

Living Room 3.60m (11'10") x 2.87m (9'5") max

Double glazed window to front, storage cupboard, radiator,

Kitchen 4.07m (13'4") x 3.31m (10'10")

Fitted with a matching range of base and eye level units with worktop space over, stainless steel sink unit with single drainer and mixer tap with tiled splashbacks, plumbing for washing machine, space for, fitted electric oven, built-in four ring electric hob with extractor hood over, double glazed window to rear, radiator.

First Floor

Bedroom 2.56m (8'5") x 2.23m (7'4")

Double glazed window to rear, storage cupboard, radiator.

Bedroom 4.07m (13'4") x 2.34m (7'8")

Two double glazed windows to front, storage cupboard, radiator.

Bathroom

Fitted with three piece suite comprising panelled bath with shower attachment off mixer tap, pedestal wash hand basin and low-level WC, full height tiling to all walls, obscure double glazed window to rear, radiator, tiled flooring.

Second Floor

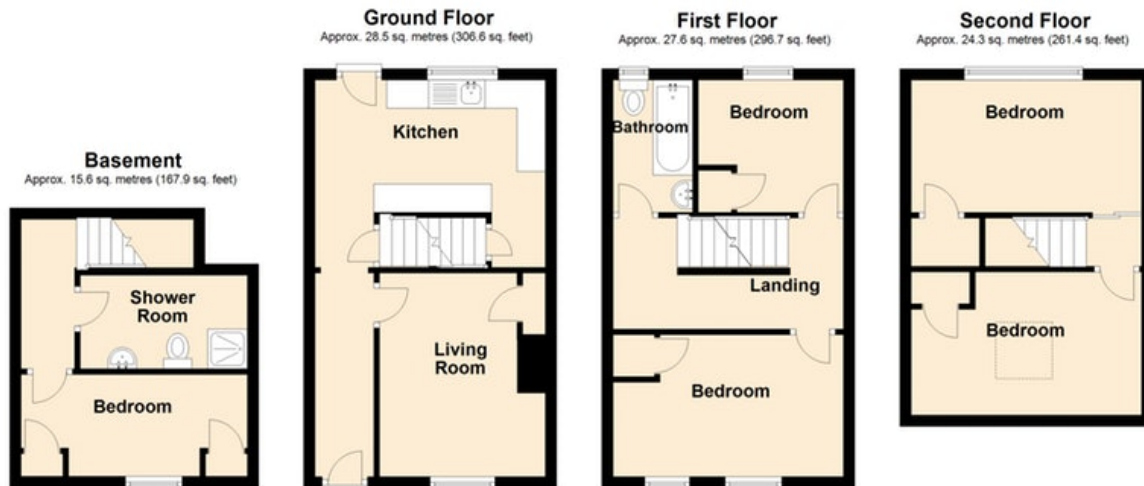
Bedroom 4.07m (13'4") x 2.39m (7'10")

Double glazed window to rear, radiator, storage cupboard.

Bedroom 4.07m (13'4") x 2.53m (8'4")

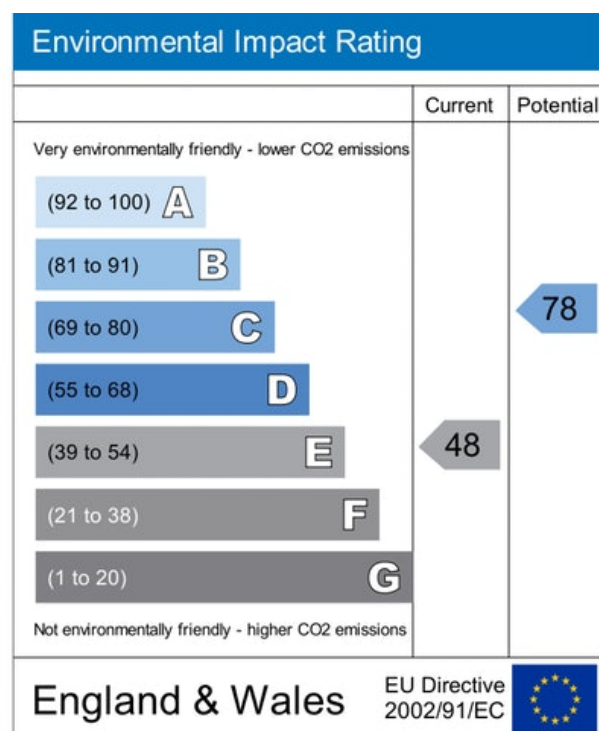
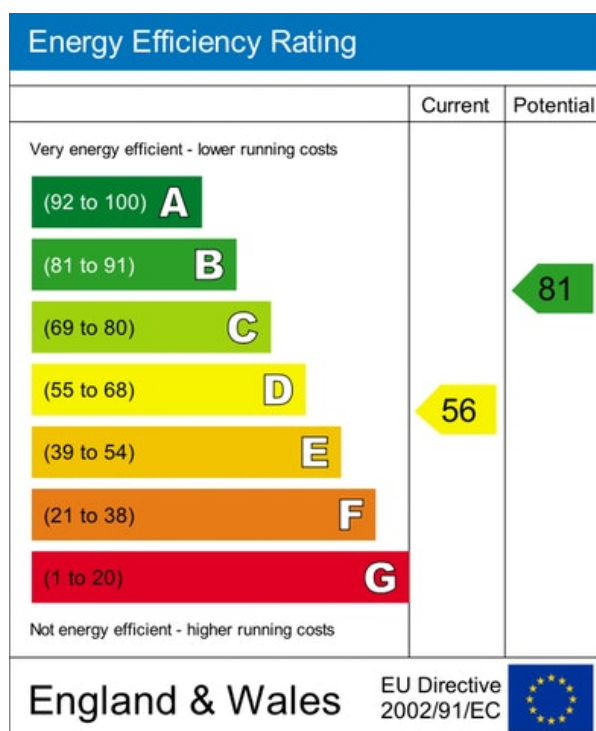
Velux skylight, storage cupboard, radiator.

Floor plan:



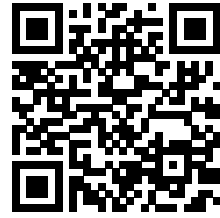
Total area: approx. 95.9 sq. metres (1032.5 sq. feet)

Energy Performance Certificate:



MISREPRESENTATION ACT, 1967.

Conditions under which these particulars are issued Housesimple.com for themselves and for the vendors or lessors of this property whose agents they are, give notice:- These particulars do not constitute, nor constitute any part of, an offer or contract. All statements contained in these particulars as to this property are made without responsibility on the part of Housesimple.com or the vendors or lessors. None of the statements contained in these particulars as to this property are to be relied on as statements or representations of fact. Any intending purchasers or lessees must satisfy themselves by inspection or otherwise as to the correctness of each of the statements contained in these particulars. The vendors or lessors do not make or give, and neither Housesimple.com nor any person in their employment has any authority to make or give, any representations, or warranty whatever in relationship to this property.



To book a viewing scan this code