



## Sandy Meade, Manchester, M25

**£700,000**

Offers Over

**Tenure:** Freehold, **Bedrooms:** 6

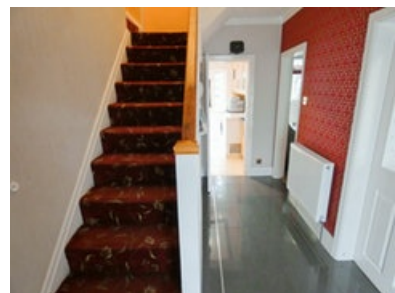
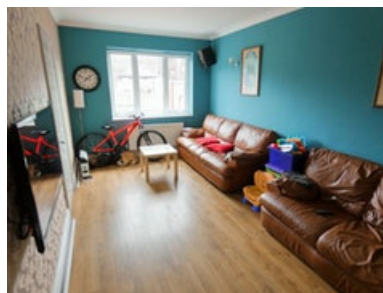
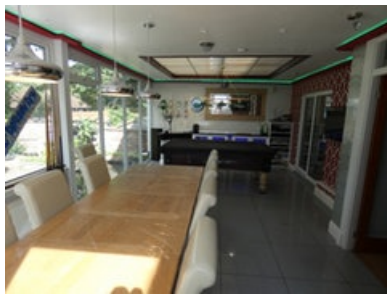
Deceptively spacious and move-in condition. This six/seven bedroom detached property has four separate reception rooms, fixtures and fittings to the highest of standards, off-road parking which is all coupled with being in a very sought after location of Prestwich. The sheer size of property on offer

## Key features:

- Bar / Conservatory
- Large Driveway
- Prime Sought Out Location
- Private Living Space
- Modified For A Large Family
- Stunning Rear Garden With Pond Feature
- Generous Room Sizes

## Extra info:

- **Property Age:** 80 years
- **Council Tax:** Band E (£2232.00 per-annum)
- **Double Glazing:** All
- **Heating:** Gas
- **Parking:** Off Street Parking



### **\*\*OFFERS OVER £700,000\*\***

Deceptively spacious and move-in condition. This six/seven bedroom detached property has four separate reception rooms, fixtures and fittings to the highest of standards, off-road parking which is all coupled with being in a very sought after location of Prestwich. The sheer size of property on offer in itself is hugely impressive and warrants internal viewing to be fully appreciated. The accommodation briefly comprises; Hallway, lounge, dining room, kitchen, conservatory, TV room, six/seven bedrooms and two bathrooms. Externally sees a very large driveway to the front providing off road parking for multiple cars and to the rear sees a large garden laid to patio and to the lawn for varying purposes. With the added benefits of gas central heating and double glazing, the property on offer must be viewed.

Floor plan:



**Ground Floor**

Floor area 140.0 sq. m. (1,507 sq. ft.) approx



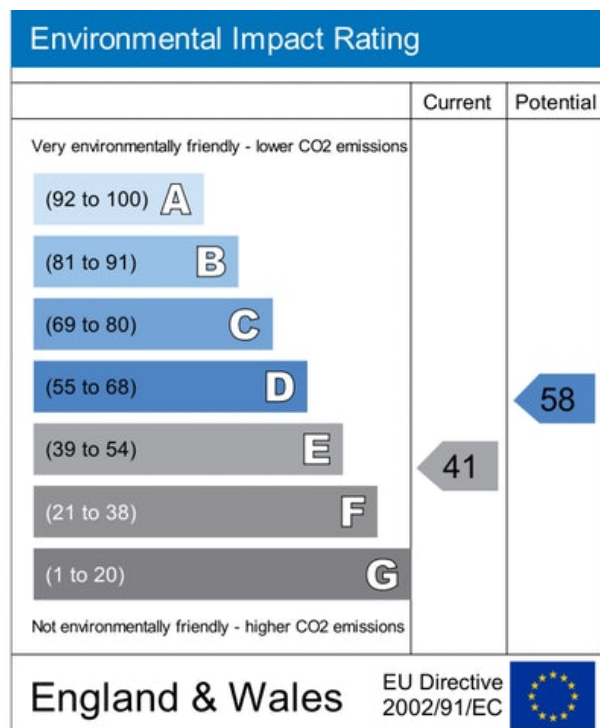
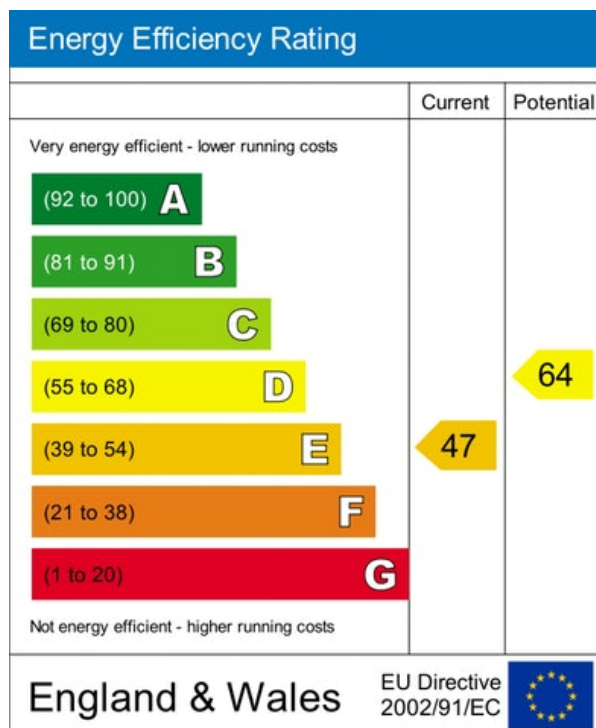
**First Floor**

Floor area 91.0 sq. m. (980 sq. ft.) approx

Total floor area 231.0 sq. m. (2,486 sq. ft.) approx

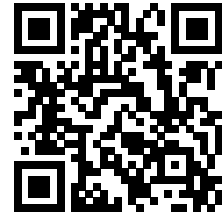
This Floor Plan is for illustration purposes only and may not be representative of the property. The position and size of doors, windows and other features are approximate. Unauthorized reproduction prohibited. © PropertyBOX

Energy Performance Certificate:



## MISREPRESENTATION ACT, 1967.

Conditions under which these particulars are issued Housesimple.com for themselves and for the vendors or lessors of this property whose agents they are, give notice:- These particulars do not constitute, nor constitute any part of, an offer or contract. All statements contained in these particulars as to this property are made without responsibility on the part of Housesimple.com or the vendors or lessors. None of the statements contained in these particulars as to this property are to be relied on as statements or representations of fact. Any intending purchasers or lessees must satisfy themselves by inspection or otherwise as to the correctness of each of the statements contained in these particulars. The vendors or lessors do not make or give, and neither Housesimple.com nor any person in their employment has any authority to make or give, any representations, or warranty whatever in relationship to this property.



To book a viewing scan this code