



Vicarage Road, Longwood, HD3

£130,000

Offers in Region of

Tenure: Freehold, **Bedrooms:** 2

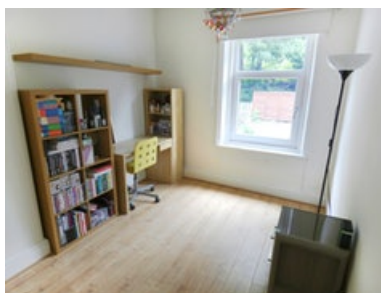
Housesimple are pleased to bring to the market this mid terrace property, with two double bedrooms plus attic room, located in the sought after area of Longwood. In brief, the property comprises of Entrance hall, lounge, kitchen/diner and utility room to the ground floor. First-floor landing, t

Key features:

- Two Double Bedrooms
- Attic Room
- Ideal first home
- Close to local amenities
- Very well presented
- Modern touch with original features
- Viewings highly recommended
- Spacious kitchen

Extra info:

- **Property Age:** 119 years
- **Council Tax:** Band A (£98.00 per-month)
- **Double Glazing:** All
- **Heating:** Gas
- **Parking:** Street Parking



Housesimple are pleased to bring to the market this mid terrace property, with two double bedrooms plus attic room, located in the sought after area of Longwood. In brief, the property comprises of Entrance hall, lounge, kitchen/diner and utility room to the ground floor. First-floor landing, two double bedrooms and bathroom, additionally the second floor offers an attic room. Externally the property provides front and rear gardens.

Entrance Hallway

Enter the property through a composite door into the entrance hallway providing access to the first floor and also the cellar which is ideal for storage. With a central heated radiator.

Lounge 12'4" x 9' 10" (3.77m x 3.00m)

Featuring a coal fireplace with wooden flooring and wall lights with a central heated radiator and a uPVC double glazed window to the front aspect.

Kitchen/diner 12' 11" Into Room x 12' 11" (3.96m x 3.94m)

Kitchen/Diner 13' 1" Into Recess x 12' 11" (3.96m x 3.94m)

Boasts a range of wall and base fitted units with complimentary work surfaces and a large log burner fire with a uPVC double glazed window to the rear and access to the utility room.

Utility Room 7' 5" x 5' 10" (2.26m x 1.78m)

Providing worksurfaces incorporating a stainless-steel sink and drainer unit with tiling to the splash areas and plumbing available for a washing machine and dishwasher. With a uPVC double glazed window to the side and rear, and a composite door to access the rear garden.

First Floor Landing

Providing access to the bedrooms and house bathroom with access via staircase to the second-floor attic room.

Bedroom One 12' 1" x 10' 1" (3.96m x 3.23m)

The master bedroom benefits from built in wardrobes and cupboards with a central heated radiator and a uPVC double glazed window to the front offering far reaching views.

Bedroom Two 12' x 9' (3.66m x 2.74m Into Recess Maximum)

Includes built-in cupboards with a central heated radiator and a uPVC double glazed window to the side aspect.

Bathroom 12' x 5' 10" (3.66m x 1.78m)

The house bathroom offers a four piece suite comprising of: A free-standing bath, separate shower cubicle, a wash hand basin and a low-level push button flush WC. The room offers tiled walls and flooring with a heated towel rail and a frosted UPVC double glazed window to the rear elevation.

Second Floor

Attic Room 15' 7" Maximum x 13'1 (4.75m x 3.99m)

Featuring exposed wooden beams with a central heated radiator and two skylight windows.

External Details

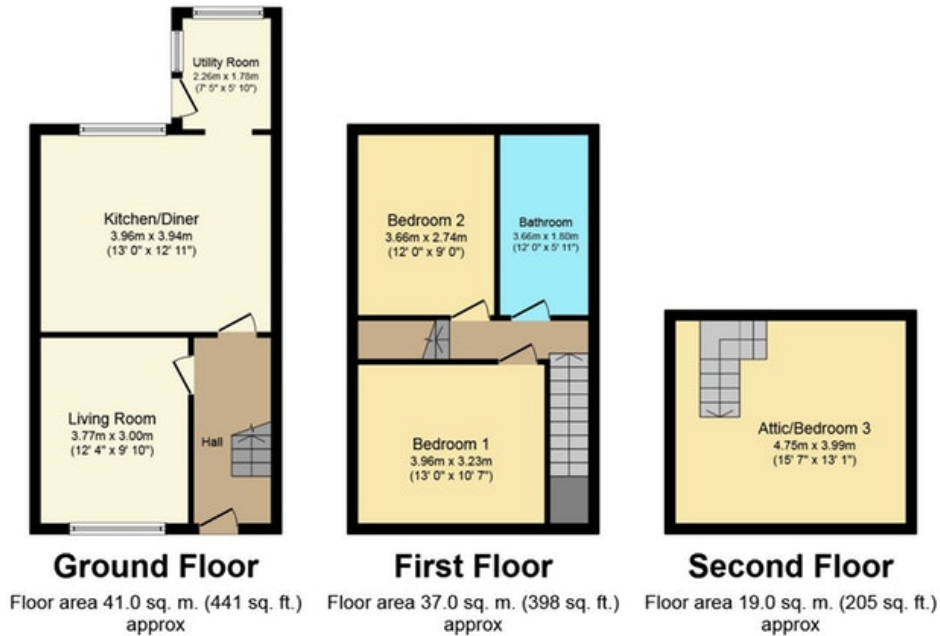
Externally the property provides front and rear gardens.

To the front, there are stairs leading up to a paved area ideal for seating with additional stairs leading to the entrance doorway.

The rear of the property offers a paved seating area with stairs leading up to pebbled garden space with stairs also leading up to the back lane. There is also outside water supply.

This would make a wonderful first home. Viewing strongly advised.

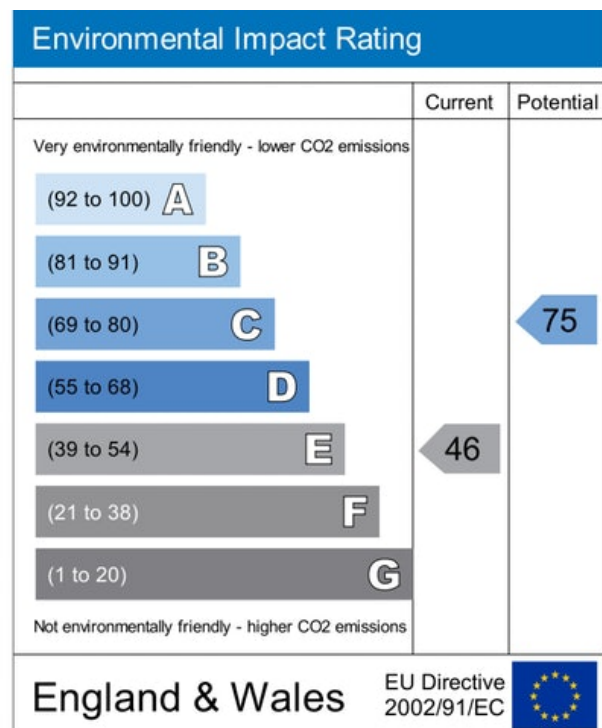
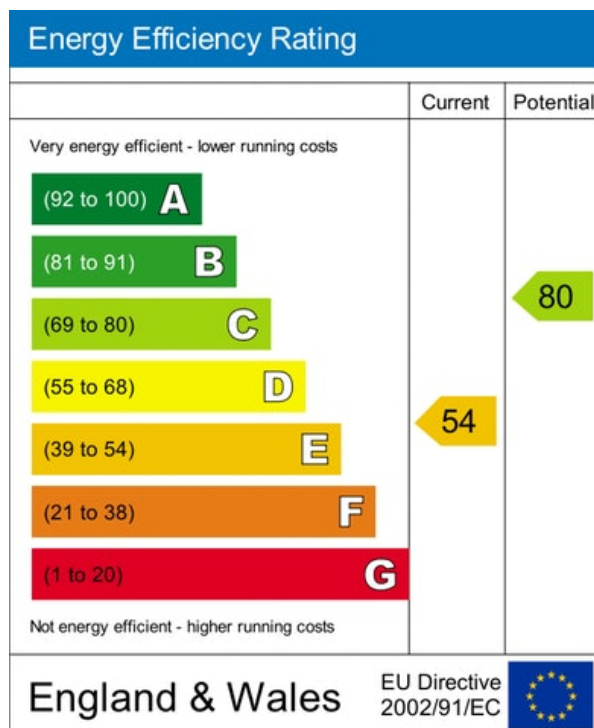
Floor plan:



Total floor area 97.0 sq. m. (1,044 sq. ft.) approx

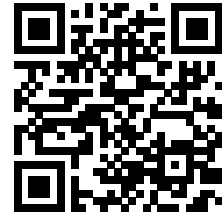
This Floor Plan is for illustration purposes only and may not be representative of the property. The position and size of doors, windows and other features are approximate. Unauthorized reproduction prohibited. © PropertyBOX

Energy Performance Certificate:



MISREPRESENTATION ACT, 1967.

Conditions under which these particulars are issued Housesimple.com for themselves and for the vendors or lessors of this property whose agents they are, give notice:- These particulars do not constitute, nor constitute any part of, an offer or contract. All statements contained in these particulars as to this property are made without responsibility on the part of Housesimple.com or the vendors or lessors. None of the statements contained in these particulars as to this property are to be relied on as statements or representations of fact. Any intending purchasers or lessees must satisfy themselves by inspection or otherwise as to the correctness of each of the statements contained in these particulars. The vendors or lessors do not make or give, and neither Housesimple.com nor any person in their employment has any authority to make or give, any representations, or warranty whatever in relationship to this property.



To book a viewing scan this code