



Longroyd Place, Leeds, LS11

£80,000

None

Tenure: Freehold, **Bedrooms:** 2

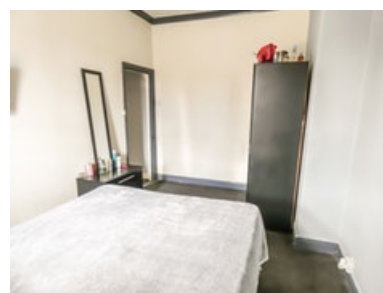
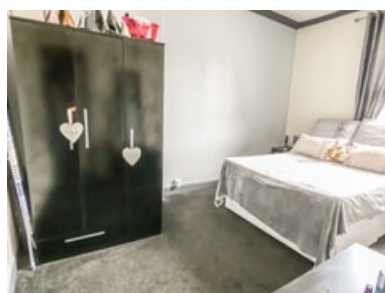
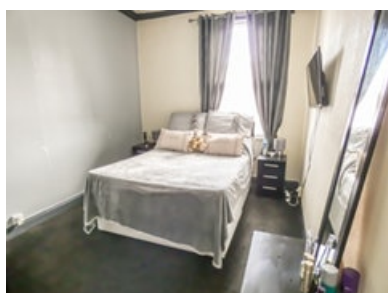
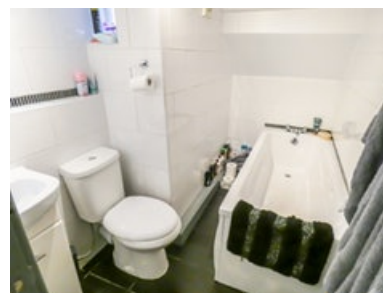
Housesimple are pleased to bring to the market this well presented back to back mid terrace house featuring two bedrooms, arranged over three floors. The property has steps leading into the ground floor lounge with staircase to the lower ground floor generous sized kitchen and a white bathroom.

Key features:

- Well Presented
- Viewings Highly Recommended
- Ideal first home
- Ready to move straight into
- Close to local amenities
- close to city centre
- Good motorway Networks
- Good size living accommodation

Extra info:

- **Property Age:** 89 years
- **Council Tax:** Band A (£1096.60 per-annum)
- **Double Glazing:** All
- **Heating:** Gas
- **Parking:** Street Parking

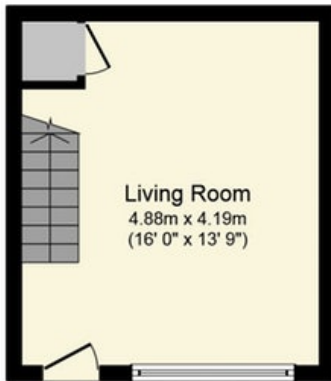


Housesimple are pleased to bring to the market this well presented back to back mid terrace house featuring two bedrooms, arranged over three floors. The property has steps leading into the ground floor Kitchen and bathroom with staircase to the lower ground floor generous sized Lounge

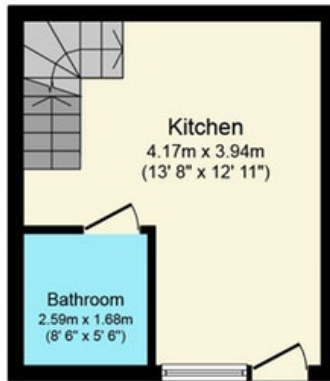
On the first floor, there are two bedrooms. Outside there is a small courtyard area and on-street parking. The property is located under two miles from the city centre as well as being close to the motorway network providing links to other business centres across the North. There are shops and transport services nearby providing a number of local amenities.

With double glazing and central heating, This would make an ideal first home not to be missed ready to move straight into.

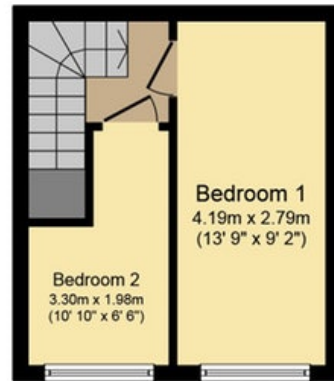
Floor plan:



Ground Floor
Floor area 20.0 sq. m. (215 sq. ft.) approx



First Floor
Floor area 20.0 sq. m. (215 sq. ft.) approx

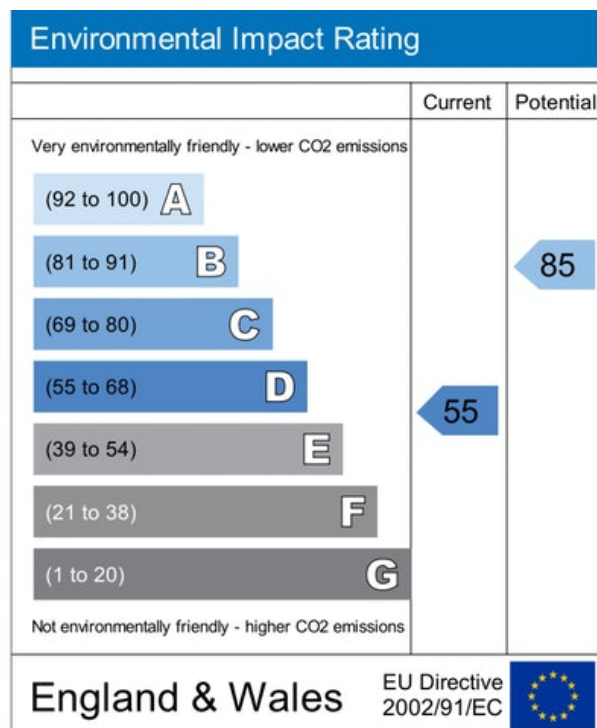
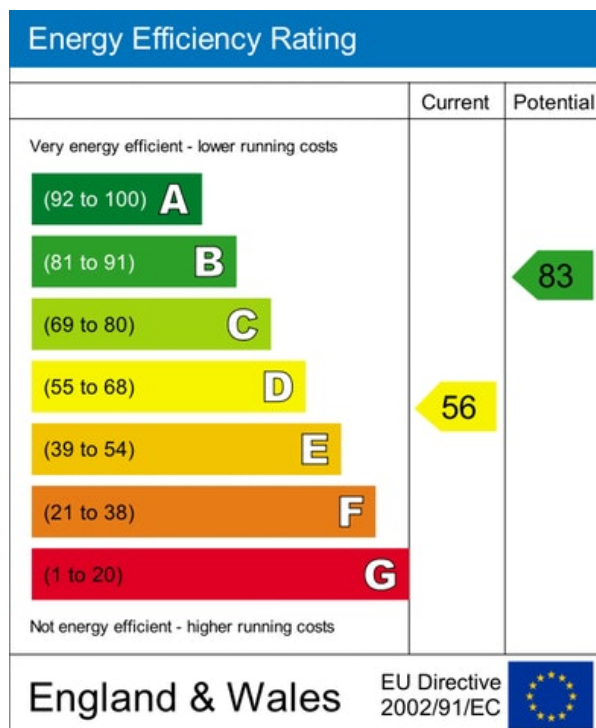


Second Floor
Floor area 20.0 sq. m. (215 sq. ft.) approx

Total floor area 60.0 sq. m. (646 sq. ft.) approx

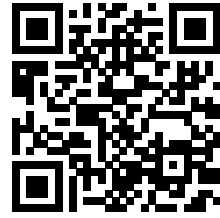
This Floor Plan is for illustration purposes only and may not be representative of the property. The position and size of doors, windows and other features are approximate. Unauthorized reproduction prohibited. © PropertyBOX

Energy Performance Certificate:



MISREPRESENTATION ACT, 1967.

Conditions under which these particulars are issued Housesimple.com for themselves and for the vendors or lessors of this property whose agents they are, give notice:- These particulars do not constitute, nor constitute any part of, an offer or contract. All statements contained in these particulars as to this property are made without responsibility on the part of Housesimple.com or the vendors or lessors. None of the statements contained in these particulars as to this property are to be relied on as statements or representations of fact. Any intending purchasers or lessees must satisfy themselves by inspection or otherwise as to the correctness of each of the statements contained in these particulars. The vendors or lessors do not make or give, and neither Housesimple.com nor any person in their employment has any authority to make or give, any representations, or warranty whatever in relationship to this property.



To book a viewing scan this code