



Aldwyn Crescent, Stockport, SK7

£280,000

None

Tenure: Freehold, **Bedrooms:** 3

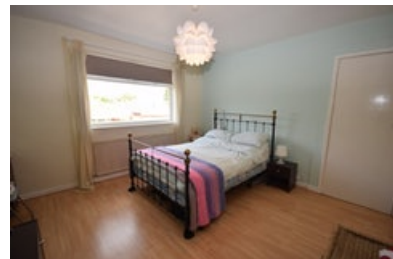
Housesimple is offering for sale this superb three bedroom property in this sought after area of Hazel Grove benefiting from its proximity to local amenities, well-respected schools and good transport links into Manchester City Centre and to Manchester Airport. You enter the property through a light

Key features:

- Three bedrooms
- Off street parking
- Popular location
- Sunny aspect garden
- Good Schools
- Great transport links

Extra info:

- **Property Age:** 65 years
- **Council Tax:** Band D (£1916.90 per-annum)
- **Double Glazing:** All
- **Heating:** Gas
- **Parking:** Private Driveway



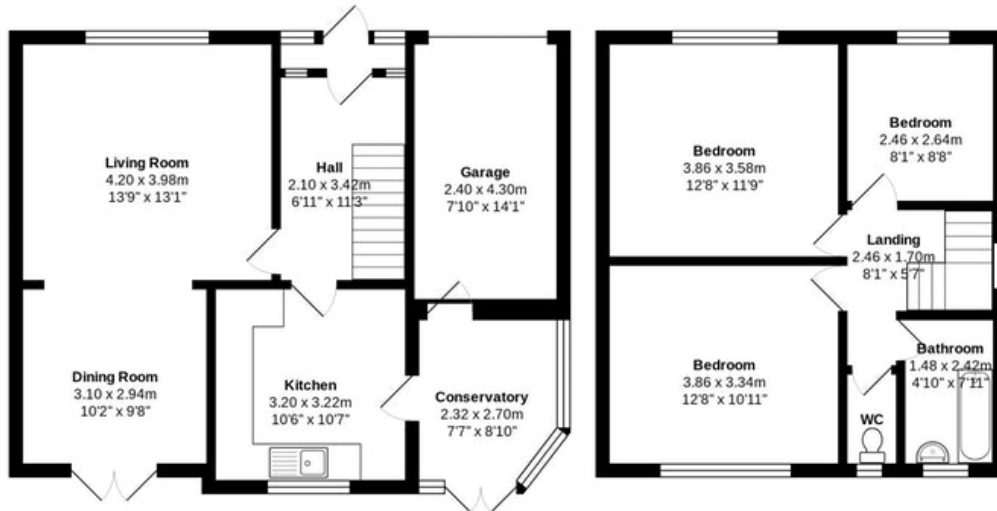
Housesimple is offering for sale this superb three bedroom property in this sought after area of Hazel Grove benefiting from its proximity to local amenities, well-respected schools and good transport links into Manchester City Centre and to Manchester Airport.

You enter the property through a light and bright porch, to the right, is a well presented open plan living/dining room which has loads of natural light through the glazed patio doors which serve as an exit to the private south facing garden. To the back of the house alongside the dining room is the good sized fitted kitchen which has a window overlooking the garden and doorway into the conservatory and another access into the sunny garden that offers a lovely patio seating area ideal for BBQ's in the warmer summer months. The integral garage can be accessed from the conservatory. Upstairs there are three well-proportioned bedrooms, plus a WC and family bathroom.

Overall this could make the ideal home for any new buyer, in a popular area with great local amenities, transport links, shops, and schools, well presented and ready to move into, benefiting from a large south facing garden and off street parking to the front for a number of cars.

Call or click to book a viewing.

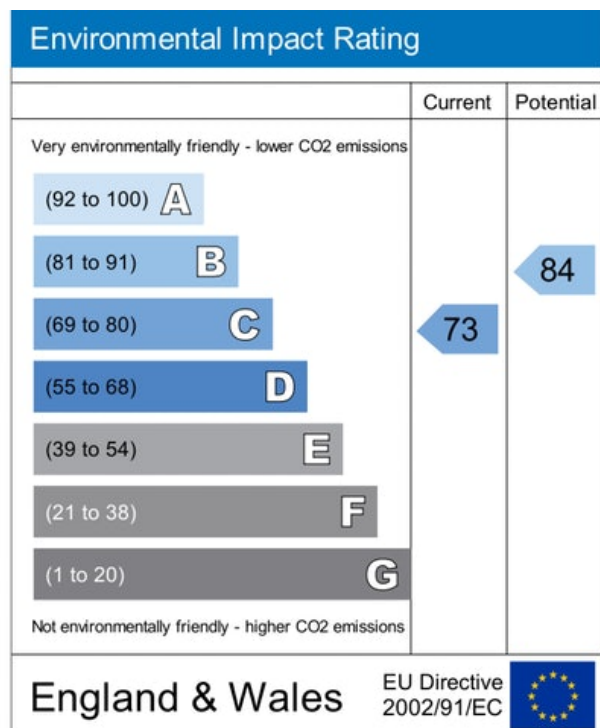
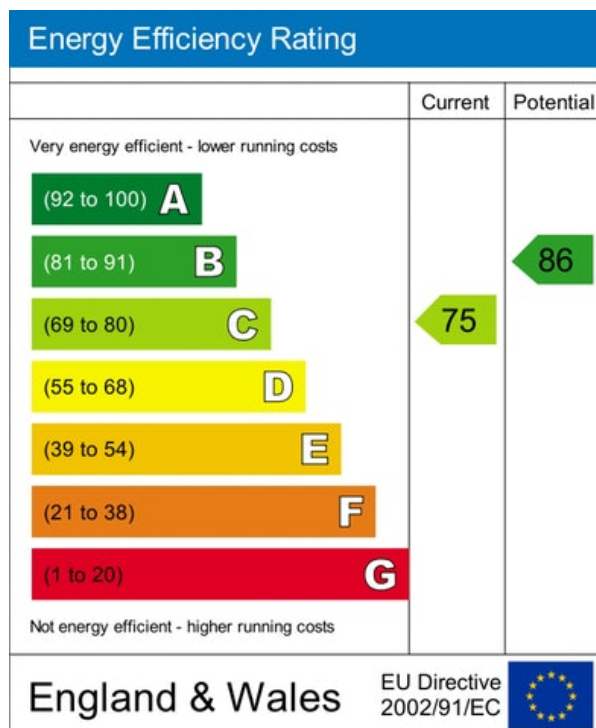
Floor plan:



Total Area: 110.1 m² ... 1185 ft²

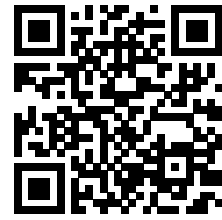
All measurements are approximate and for display purposes only

Energy Performance Certificate:



MISREPRESENTATION ACT, 1967.

Conditions under which these particulars are issued Housesimple.com for themselves and for the vendors or lessors of this property whose agents they are, give notice:- These particulars do not constitute, nor constitute any part of, an offer or contract. All statements contained in these particulars as to this property are made without responsibility on the part of Housesimple.com or the vendors or lessors. None of the statements contained in these particulars as to this property are to be relied on as statements or representations of fact. Any intending purchasers or lessees must satisfy themselves by inspection or otherwise as to the correctness of each of the statements contained in these particulars. The vendors or lessors do not make or give, and neither Housesimple.com nor any person in their employment has any authority to make or give, any representations, or warranty whatever in relationship to this property.



To book a viewing scan this code